



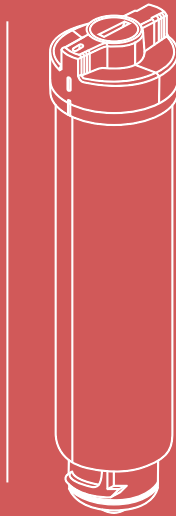
HC-XII.

BIBO Cleaning Cartridge

BIBO descaling instructions

Contents

1. HC-XII cleaning cartridge
2. Screw cap
3. Cartridge stand
4. Cartridge key
5. Protective gloves
6. Acid PH test strips
7. Dissolvable tablets
 - a. 1 x sanitising tablet (cold tank)
 - b. 5 x descaling tablet (hot tank)



Safety tips & guidance

The BIBO descaling tablet **contains citric acid** – MSDS available upon request. The BIBO sanitising tablet contains **sodium carbonate and sodium percarbonate** – MSDS available upon request. Wear the protective gloves provided whilst handling dissolvable tablets.

WARNING – tablets can cause skin irritation and serious eye irritation. Wash hands thoroughly after handling.

IF IN EYES: rinse cautiously with water for several minutes.

Remove contact lenses if possible.

IF ON SKIN: Wash hands with plenty of soap and water. If skin irritation occurs, seek medical attention/advice. You must not drink from your BIBO until the descaling and sanitising has been completed and the filter has been replaced.

The entire descaling and sanitising process will take approximately 1hr 15mins to complete.

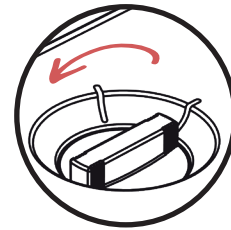
You will need a 1L measuring jug suitable for dispensing hot water into.

1. Wearing the gloves provided, dispense 500ml of hot water into a measuring jug.
2. Carefully drop the 5 x descaling tablets into your measuring jug. Wait at least 5 minutes for the tablets to fully dissolve.
3. Use your cartridge key to unscrew the cap on the top of your cleaning cartridge.

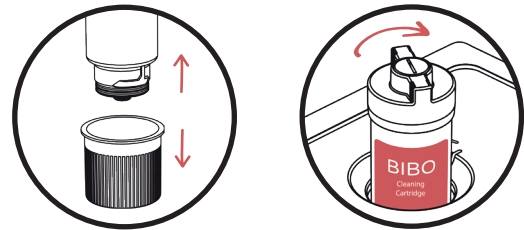


4. Carefully pour the dissolved solution into your cleaning cartridge.
5. Use your cartridge key to screw the cap back into the top of your cleaning cartridge. Place the cartridge into its stand.

6. Remove the lid on the top of your BIBO by simply lifting it off from the back.
7. Identify the filter, turn it anti-clockwise until the cartridge releases & lift to remove it from your BIBO.



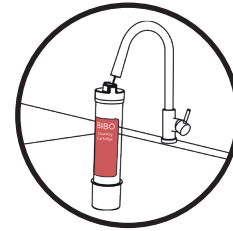
8. Remove your cleaning cartridge from its stand and insert it into your BIBO, turning it clockwise into place.



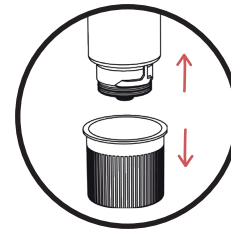
9. Place your measuring jug under the dispense nozzles of your BIBO. Dispense 1L of hot water and discard.
10. Wait 30 minutes - **DO NOT USE YOUR BIBO DURING THIS TIME!**
11. After 30 minutes, dispense 6L of hot water from your BIBO and discard.
12. Remove the cleaning cartridge from your BIBO by turning it anti-clockwise.



13. Remove the screw cap from the top of the cleaning cartridge, empty and rinse thoroughly after use. Leave to dry.



14. Once fully dry, refit cartridge stand onto your cleaning cartridge for storage and to protect the seal.



If you are sanitising your BIBO right away, please move onto the BIBO sanitising instructions. (pg. 5)
If not, continue with the instructions below.

15. Insert your filter cartridge into your BIBO by turning it clockwise into place.

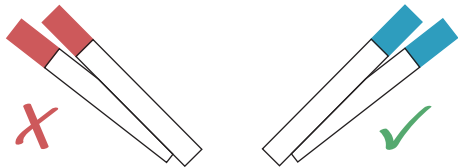


16. Dispense 3L of hot water into your measuring jug and discard.

17. Dispense a further 1L of water into your measuring jug and test the water using the acid PH test strips provided.

If your test strip remains BLUE: Your BIBO is now safe to use.

If your test strip turns RED: Keep dispensing water until all the residual cleaning solution has been flushed from the system.



18. Replace the lid on the top of your BIBO.

19. Your BIBO is now ready to use!

REMEMBER: Your cleaning cartridge is reusable, so store it safely for next time!





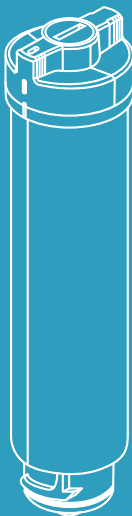
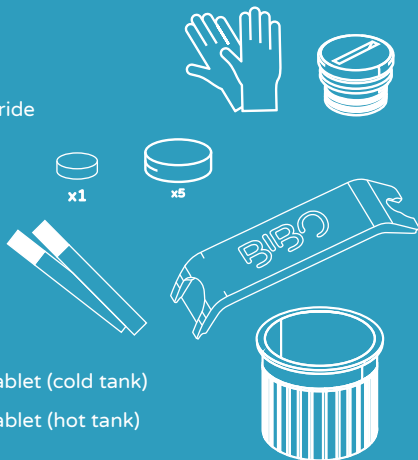
HC-XII.

BIBO Cleaning Cartridge

BIBO sanitising instructions

Contents

1. HC-XII cleaning cartridge
2. Screw cap
3. Cartridge stand
4. Cartridge key
5. Protective gloves
6. Acid PH test strips
7. Dissolvable tablets
 - a. 1 x sanitising tablet (cold tank)
 - b. 5 x descaling tablet (hot tank)



Safety tips & guidance

The BIBO descaling tablet **contains citric acid** – MSDS available upon request. The BIBO sanitising tablet contains **sodium carbonate and sodium percarbonate** – MSDS available upon request. Wear the protective gloves provided whilst handling dissolvable tablets.

WARNING – tablets can cause skin irritation and serious eye irritation. Wash hands thoroughly after handling.

IF IN EYES: rinse cautiously with water for several minutes.

Remove contact lenses if possible.

IF ON SKIN: Wash hands with plenty of soap and water. If skin irritation occurs, seek medical attention/advice. You must not drink from your BIBO until the descaling and sanitisation has been completed and the filter has been replaced.

The entire descaling and sanitisation process will take approximately 1hr 15mins to complete.

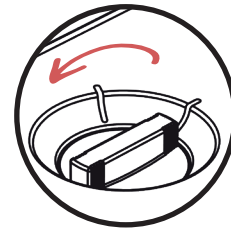
You will need a 1L measuring jug suitable for dispensing hot water into.

1. Wearing the gloves provided, dispense 500ml of hot water into a measuring jug.
2. Carefully drop the 1 x sanitising tablet into your measuring jug. Wait at least 5 minutes for the tablet to fully dissolve.
3. Use your cartridge key to unscrew the cap on the top of your cleaning cartridge.

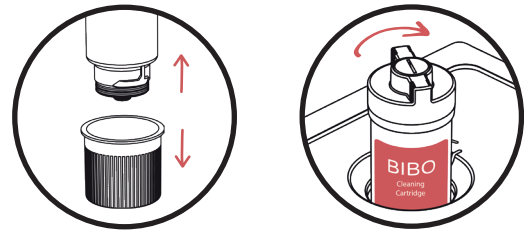


4. Carefully pour the dissolved solution into your cleaning cartridge.
5. Use your cartridge key to screw the cap back into the top of your cleaning cartridge. Place the cartridge into its stand.

6. Remove the lid on the top of your BIBO by simply lifting it off from the back.
7. Identify the filter, turn it anti-clockwise until the cartridge releases & lift to remove it from your BIBO.



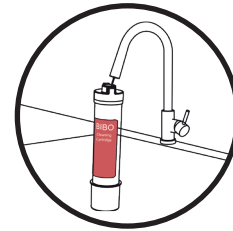
8. Remove your cleaning cartridge from its stand and insert it into your BIBO, turning it clockwise into place.



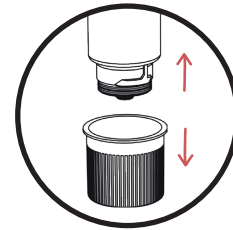
9. Place your measuring jug under the dispense nozzles of your BIBO. Dispense 1L of cold water and discard.
10. Wait 30 minutes - **DO NOT USE YOUR BIBO DURING THIS TIME!**
11. After 30 minutes, dispense 6L of cold water from your BIBO and discard.
12. Remove the cleaning cartridge from your BIBO by turning it anti-clockwise.



13. Remove the screw cap from the top of the cleaning cartridge, empty and rinse thoroughly after use. Leave to dry.



14. Once fully dry, refit cartridge stand onto your cleaning cartridge for storage and to protect the seal.



15. Insert your filter cartridge into your BIBO by turning clockwise into place.



16. Dispense 3L of cold water into your measuring jug and discard.

17. Replace the lid on the top of your BIBO.

18. Your BIBO is now ready to use!

REMEMBER: Your cleaning cartridge is reusable, so store it safely for next time!



BIBO

BIBO Ltd

Unit 15,

Blenheim Sawmills

Swan Lane, Combe,

OX29 8ET

01993 880287

customers@bibowater.co.uk

www.bibowater.co.uk